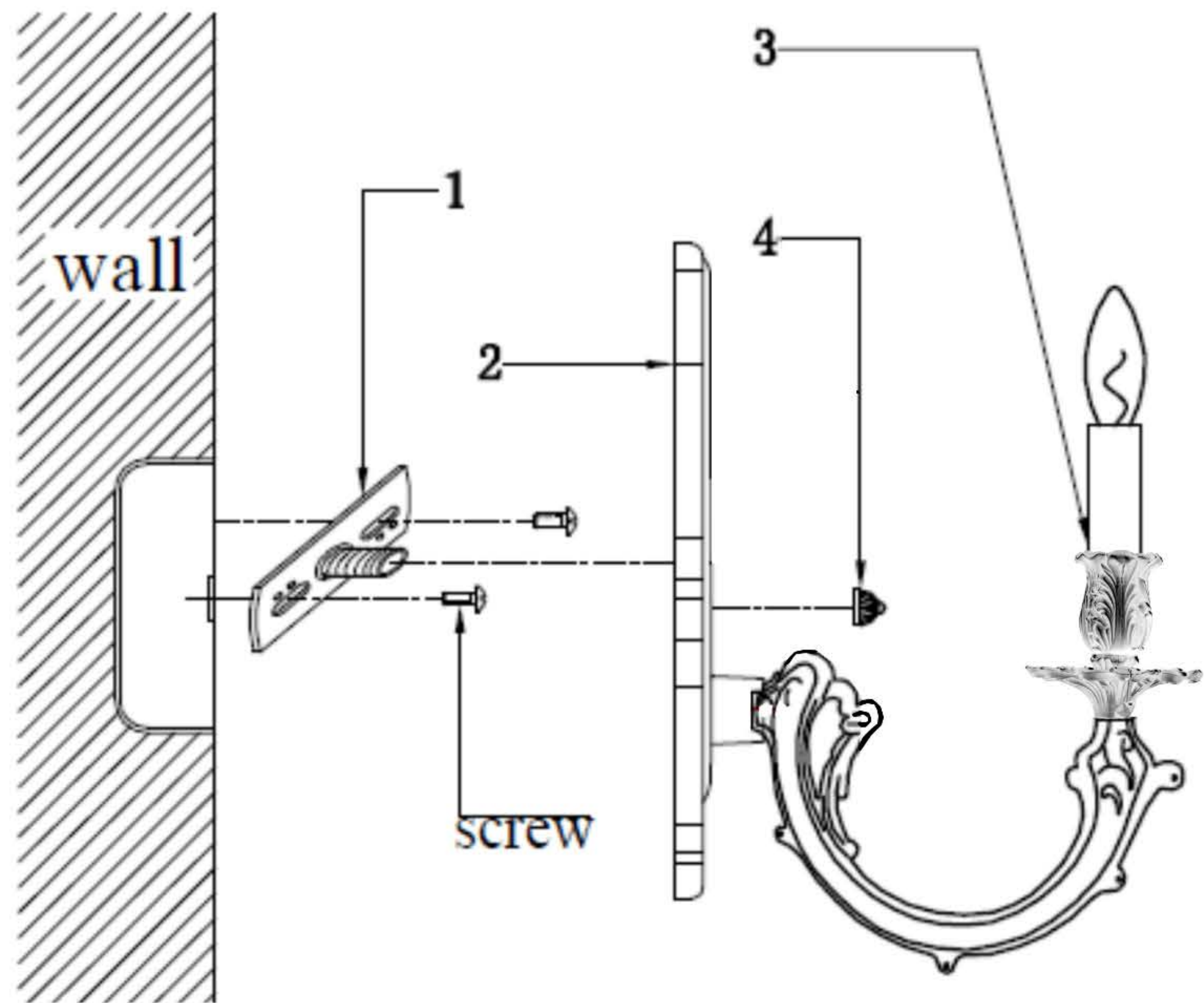


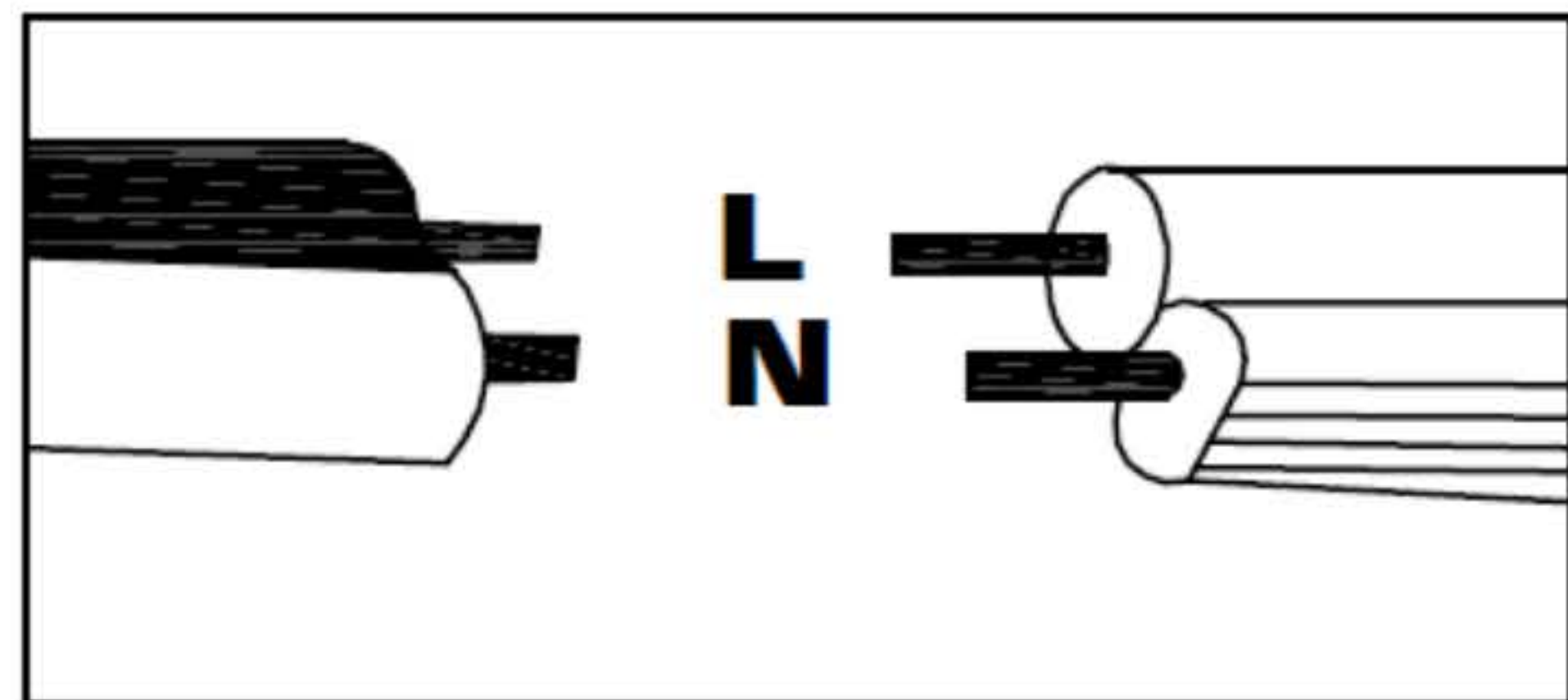
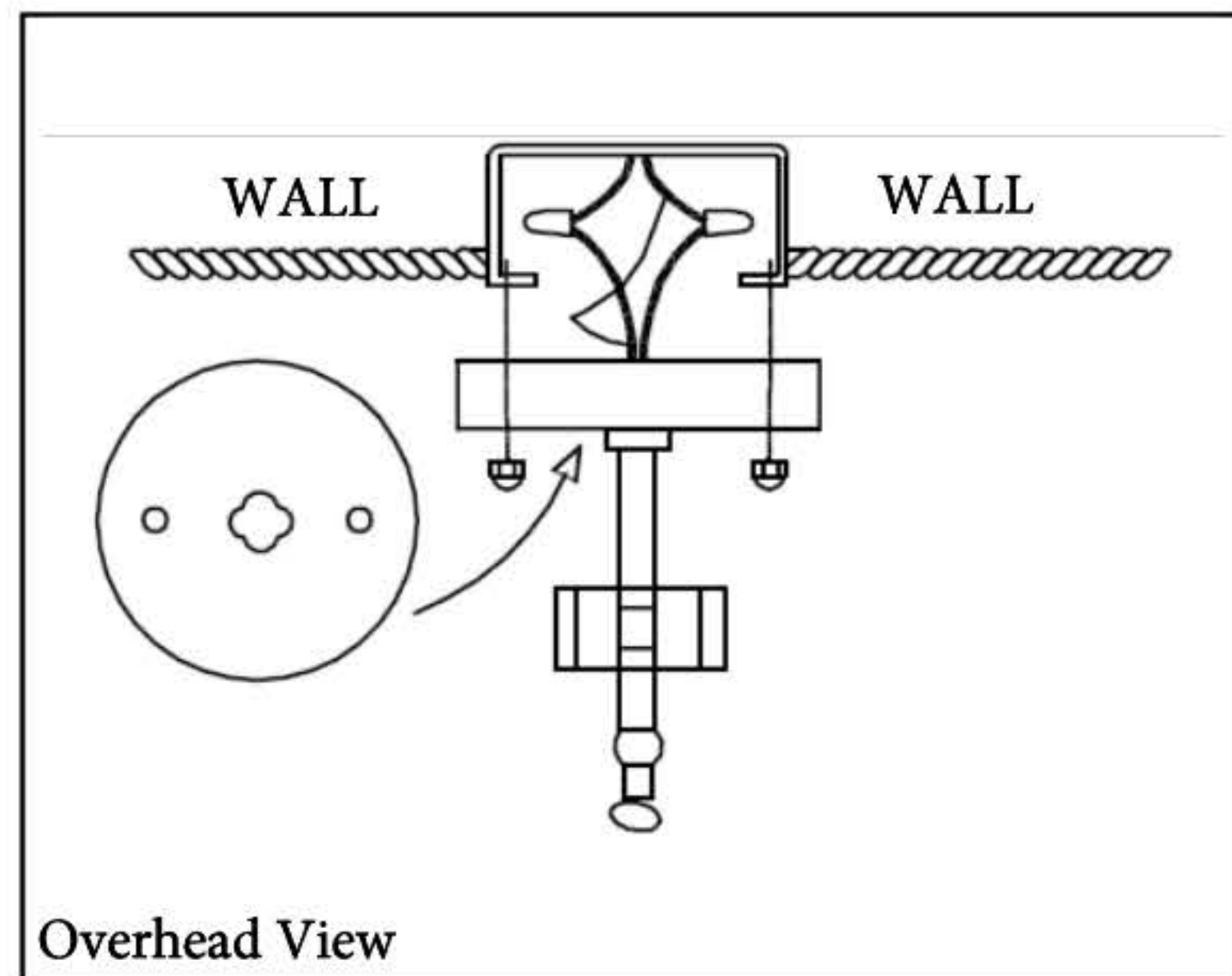
# Mounting Instruction



NOTE: Diagrams above are just representative.

1. mounting block    2. main body    3. candle pipe  
4. nipple

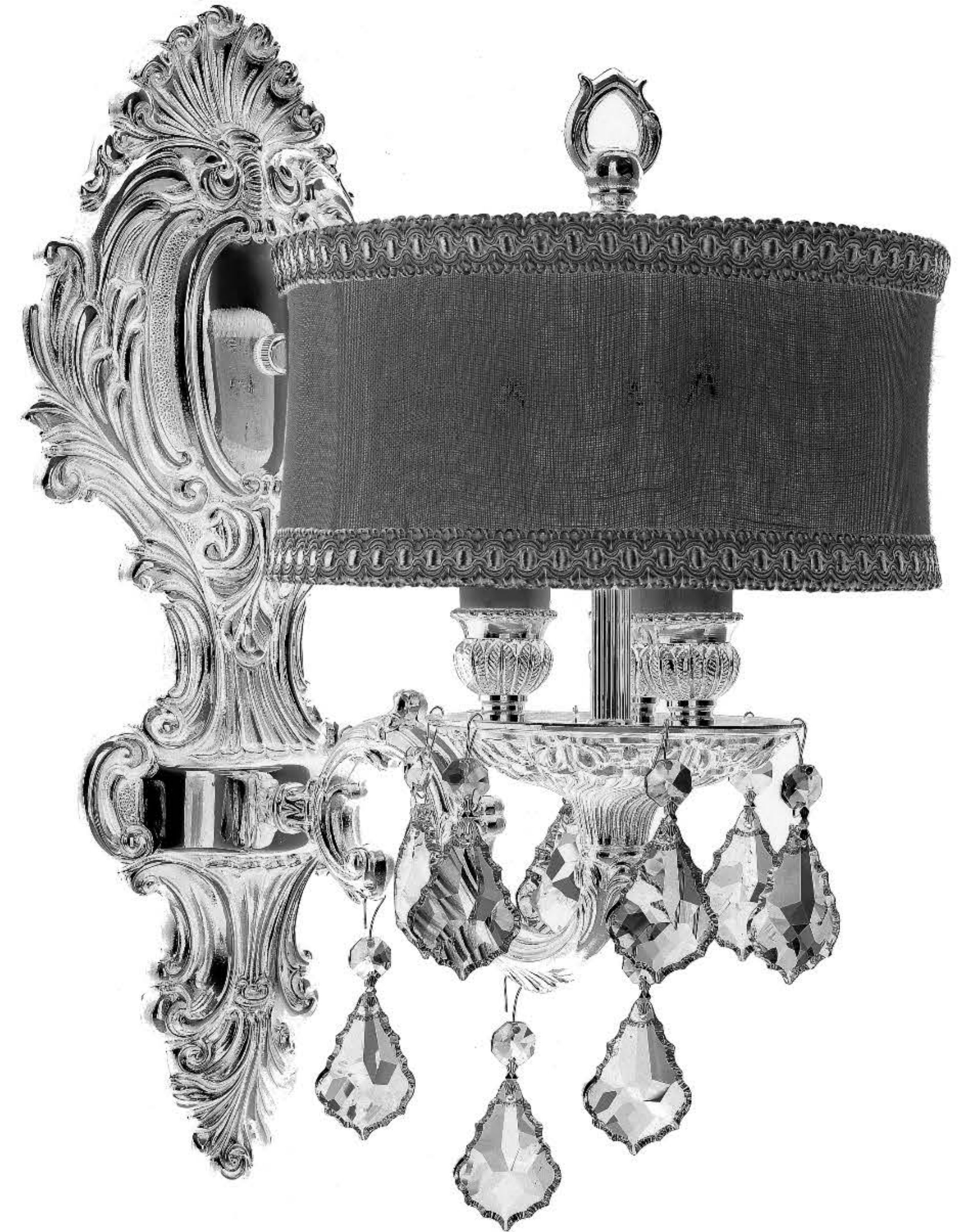
## Electrical Diagram



All electrical components must be installed by a licensed electrician and in accordance with the National Electric Code and the appropriate local electrical codes.

# American Brass & Crystal


*Casting a Finer Light*



## WS9420

American Brass and Crystal provides the finest quality components manufactured, designed and finished by master artisans. We take great pride in our production abilities and we empower our valued customers with the ability to custom create the light that is perfect for them.

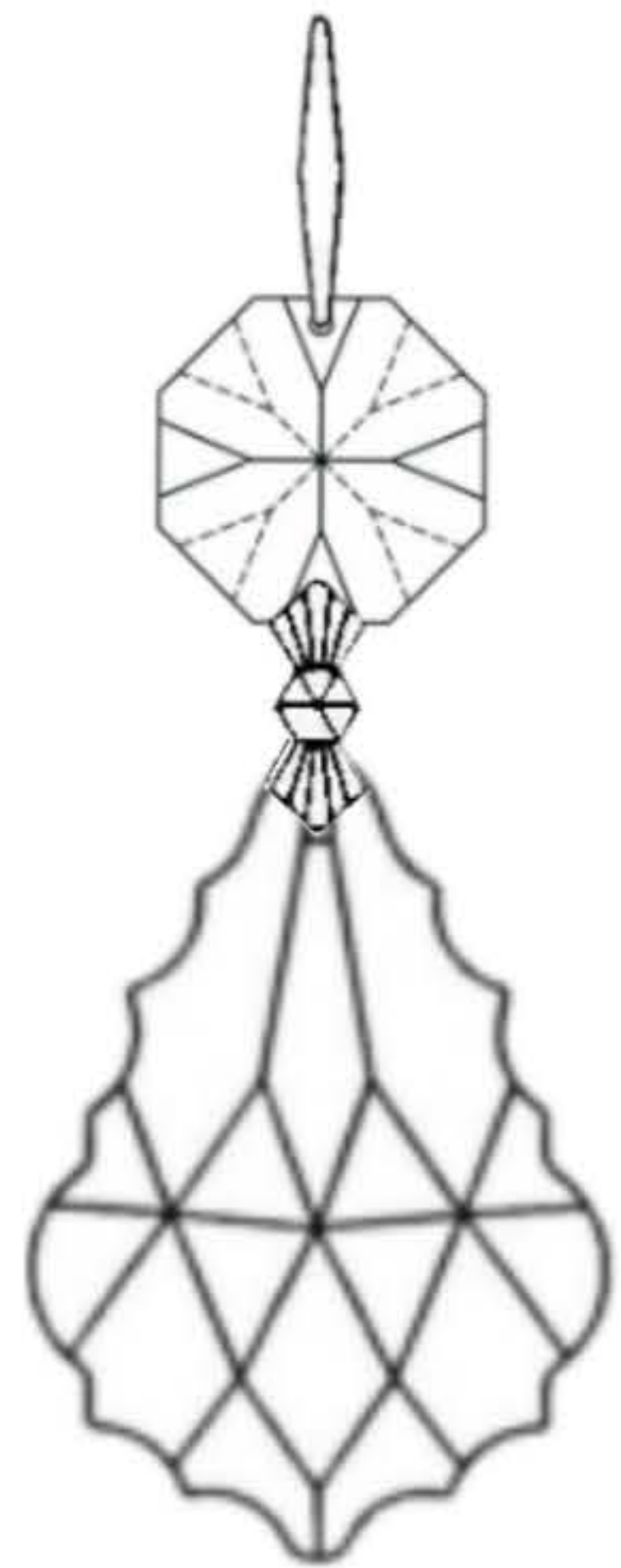
Enclosed are detailed instructions on how to properly assemble and install your sconce. If you have any questions please call our toll free customer service hotline at: **1-(877)-465-5617**

 American Brass and Crystal  
835 Lehigh Avenue, Union, NJ 07083

[www.abclighting.net](http://www.abclighting.net)



# Crystal Component Detail



Letter: A  
Quantity: 9

2" Drop with  
1-14mm Octagon

Connect to the back,  
middle and front  
locations on the arm.

Connect to all 6  
stations around the  
cover.

Note: Diagrams are just representative

# Crystal Trimming Directions

Begin trimming your sconce after all of the electrical connections have been made, the lights have been tested and the sconce is in good working order. Begin trimming in Alphabetical order. Do not unwrap the next letter until previous one is complete.

